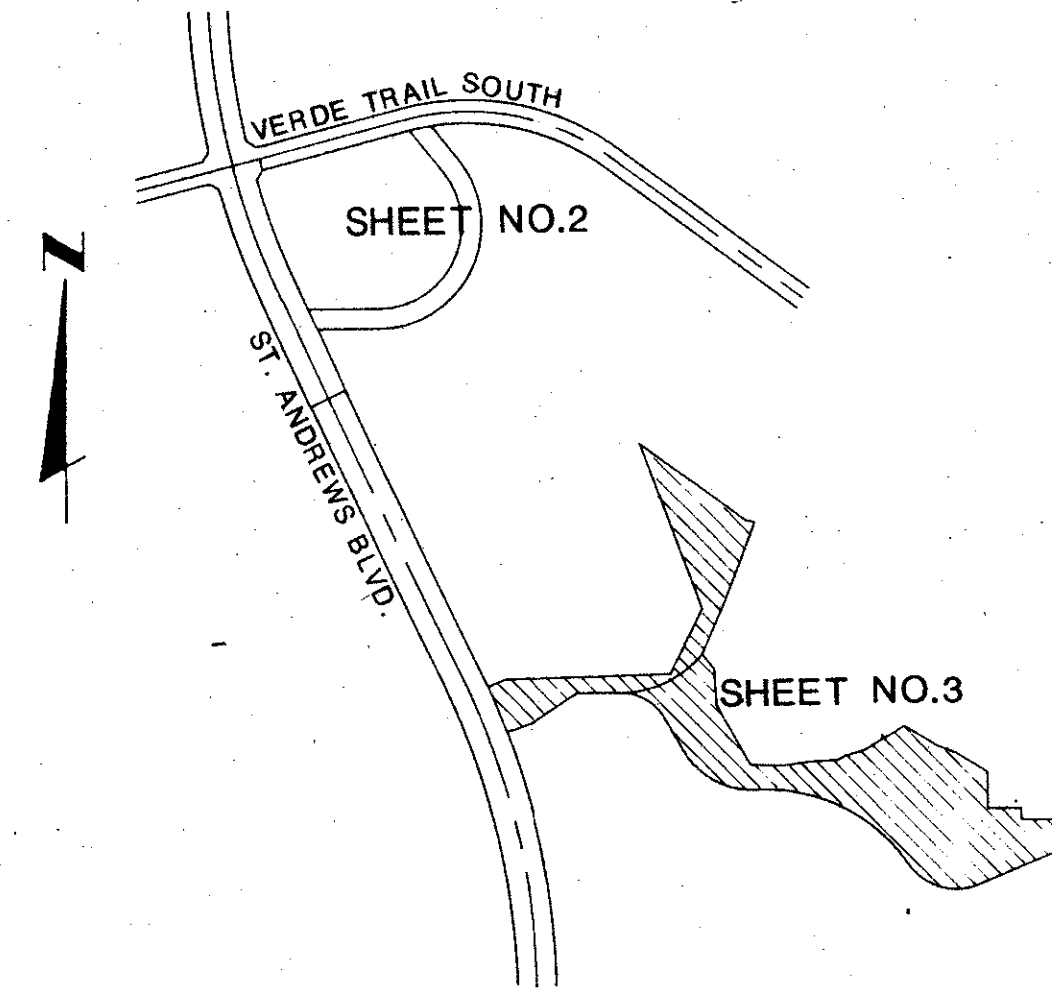
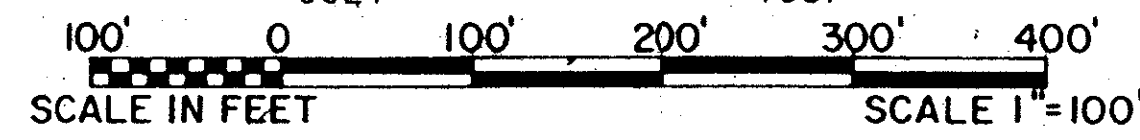


PLAT NO. THREE - VIA VERDE P.U.D.
IN PART OF SECTION 23, TOWNSHIP 47 SOUTH, RANGE 42 EAST
PALM BEACH COUNTY, FLORIDA
IN THREE SHEETS SHEET NO. 3

GEE & JENSON
ENGINEERS - ARCHITECTS - PLANNERS, INC.
WEST PALM BEACH, FLORIDA
JULY 1987



STATE OF FLORIDA
COUNTY OF PALM BEACH
This plat was filed for
record at _____ W. this _____ day
of _____ 1988, and duly
recorded in Plat Book No. _____
on Pages _____ thru _____.
JOHN B. DUNKLE
Clerk Circuit Court
By: _____ D.C.

MATCH LINE SHEET NO. 2
60' | 60'

(TOTAL)
S25°23'46"E 1115.41'

ST. ANDREWS BLVD.
P. B. 35 PGS. 190-192

TOWN PLACE, PHASE I
OF VIA VERDE - P.U.D.
P. B. 42 PGS. 75, 76 & 77

PARCEL
"B"

TOWN SWIM & RACQUET CLUB
P. B. 47 PG. 60 & 61

WIMBLEDON VILLAS OF
VIA VERDE - P. U. D.
P. B. 50 PG. 138-140

R=2391.33'
Δ=3°37'52"
A=151.57'
T=75.80'

R=2391.33'
Δ=1°29'52"
A=62.51'
T=31.26'

R=149.00'
Δ=60°41'00"
A=157.81'
T=87.21'

R=235.25'
Δ=64°00'00"
A=262.78'
T=147.00'

R=178.65'
Δ=78°18'42"
A=244.18'
T=145.47'

NOTE - ● - DENOTES P.R.M. NUMBERS AS NOTED. (Found)

COMPUTED PAC
DRAWN PAC
CHECKED d.d.D.
COMMENTS
APPROVED
REVISION

JOB NO. 87-369

6/1/94
VIA VERDE PUD PLAT 3